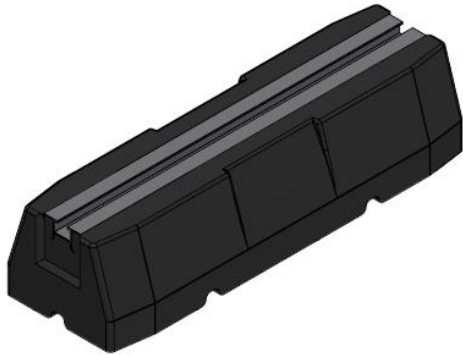


Rubber 400 - eco



Product data:

Dimension(LxWXH): 400x130x95 Specification:

The support is made of sorted recycling rubber SBR with embedded aluminum profile.

Application:

As support under the air conditioning units, ventilation ducts, pipelines and other installations.

Materials:

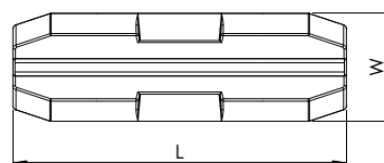
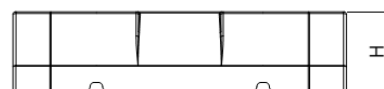
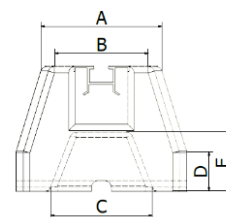
- sized granulated rubber (SBR rubber recycling),
- neutral polyurethane glue ,
- aluminum

Technical data and dimensions

Dimension	Measure [mm]	Tolerance [mm]
L	400	-0 +5
W	130	± 2
H	95	± 2
A	90	± 2
B	80,5	± 2
C	80	± 2
D	30	± 2
E	45	± 2

Weight: 3,60kg ± 10%

Load: 180 kg / 1 pcs



All products Fame Foot must in fact be installed according to the manufacturer's roof systems. The manufacturer of PVC membranes should advise on tendency to migration of plasticizers and define specific recommendations that should be taken into account during installation and which will guarantee that the roof is not affected.